

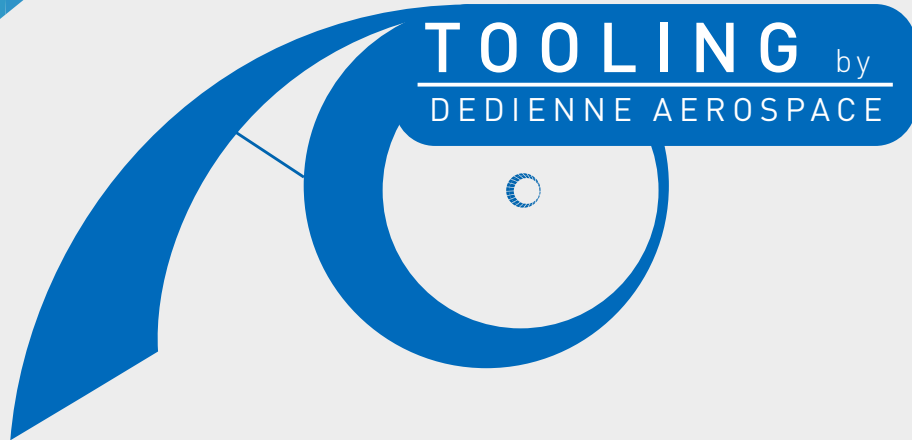
A350 UTAS

NACELLE TOOLING CATALOG

NACELLE

TOOLING by

DEDIENNE AEROSPACE







A350 GSE TOOLS

Entry into Service (EIS) recommended GSE quantities are based on a review of the Aircraft Maintenance Manual.

If you need help in order to define the tools to use and for quantity for your needs, contact us and our dedicated team will help you to do the good choice.

Dedienne will help you to choose the right tool for the right task.

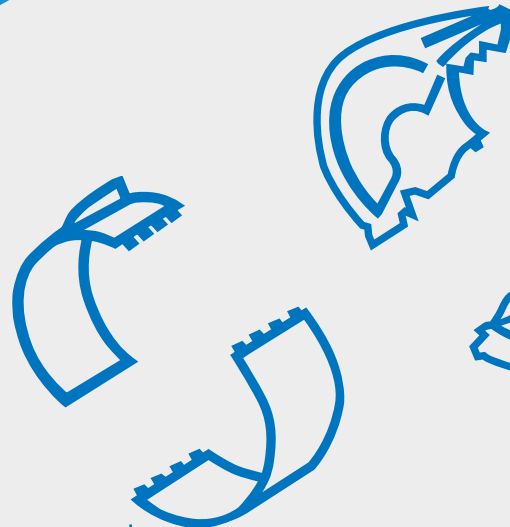


	PART NUMBER	NAME	MINIMAL QUANTITIES FOR EIS -900	MINIMAL QUANTITIES FOR EIS -1000
 INLET COWL	352-7000-1GSE	Inlet Cowl Sling	1	1
	351-7000-2GSE	Inlet Cowl Dolly	1	1
	351-7000-3GSE	Inlet Protective Rug	0	0
	351-7000-4GSE	Inlet Cowl Cover	2	2
	351-7000-5GSE	Inlet Cowl Transportation Pallet	0	0
 FAN COWLS	351-2100-14GSE	Fan Cowl Handling Sling	1	1
	351-2100-15GSE	Fan Cowl Dolly	2	2
	351-2100-16GSE	Fan Cowl Hinge Bolt Thread Protectors	1	1
	351-2200-17GSE	Fan Cowl Door Plug	2	2
	351-1000-25GSE	Forward Secondary Structure Sling	0	0
 THRUST REVERSER	351-3000-6GSE	Thrust Reverser Sling - LH / RH	1	1
	351-3000-7GSE	Thrust Reverser Dolly	1	1
	351-3000-8GSE	Thrust Reverser Hinge Bolt Thread Protector	1	1
	351-3000-10GSE	Thrust Reverser Cover	2	2
	351-3000-11GSE	Thrust Reverser C-Duct Step Blocks	0	0
	351-3000-12GSE	Thrust Reverser Hydraulic Opening System	1	1
	351-3000-26GSE	Thrust Reverser PRD Latch	0	0
	351-6100-27GSE	Translating Sleeve Handling Sling	1	1
 NOZZLE & CENTER BODY	351-3000-36GSE	Thrust Reverser Hold Open Strut to Pylon	1	1
	351-5010-19GSE	FWD Centerbody Handling Aid	0	0
	351-5010-20GSE	AFT Centerbody Handling GSE	0	0
	351-4010-21GSE	Nozzle Handling Aid	1	0
	351-4000-22GSE	Center-Body / Nozzle Protective Rug	0	0
	351-4000-23GSE	Exhaust Cover	2	2
	351-4000-24GSE	Exhaust Dolly	0	0

CONTENT



- **INLET COWL**
 - › Inlet Cowl Sling.....p.4
 - › Inlet Cowl Dolly.....p.5
 - › Inlet Protective Rug.....p.6
 - › Inlet Cowl Cover.....p.7
 - › Inlet Cowl Transportation Pallet...p.8



- **FAN COWLS**
 - › Fan Cowl Handling Sling.....p.9
 - › Fan Cowl Dolly.....p.10
 - › Fan Cowl Hinge Bolt Thread Protectors...p.11
 - › Fan Cowl Door Plug.....p.12
 - › Forward Secondary Structure Sling.....p.13



- **THRUST REVERSER**
 - › Thrust Reverser Sling - LH/ RH.....p.14
 - › Thrust Reverser Dolly.....p.15
 - › Thrust Reverser Hinge Bolt Thread Protector...p.16
 - › Thrust Reverser Cover.....p.17
 - › Thrust Reverser C-Duct Step Blocks..... p.18
 - › Thrust Reverser Hydraulic Opening System...p.19
 - › Thrust Reverser PRD Latch.....p.20
 - › Translating Sleeve Handling Sling.....p.21
 - › Thrust Reverser Hold Open Strut to Pylon.....p.22



- **NOZZLE & CENTER BODY**
 - › FWD Centerbody Handling AID.....p.23
 - › AFT Centerbody Handling GSE.....p.24
 - › Nozzle Handling Aid.....p.25
 - › Center-Body / Nozzle Protective Rug...p.26
 - › Exhaust Coverp.27
 - › Exhaust Dollyp.28



INLET COWL SLING



DESCRIPTION – USE

The Inlet Cowl Sling is used to install or remove the Inlet Cowl from the Engine. This tool has a feature that allows the tool operator to rotate the Inlet Cowl that eases the installation on the Engine or placement on the Dolly.



CAUTION

This tool is the only tool validated to lift the A350 Inlet Cowl. If the Inlet Cowl is lifted with another tool, and there is damage, the insurance company may not cover the damage.



TEST

Dedienne Aerospace has regional facilities to aide in the required annual testing and recertification.



4,70 x 1,70 x 1,30 m



680 KG



352-7000-1GSE



INLET COWL DOLLY

DESCRIPTION - USE

The Inlet Cowl Dolly is used for maintenance and moving the Inlet Cowl in the hangar or shop facility. This tool aides repair work in the hangar of shop facility.

CAUTION

This tool has been validated for the maintenance of the A350 Inlet Cowl. If the Inlet Cowl is moved or repaired on another tool and there is damage, the insurance company may not cover the damage.



4 x 2,80 x 2,85 m

2200 KG

351-7000-2GSE



INLET PROTECTIVE RUG

DESCRIPTION - USE

This tool is used as a protective mat on the Inlet Cowl Inner Barrel surface during maintenance or removal and installation activity on the Inlet Cowl. The tool prevents dents and delamination to the critical Acoustic Inner Barrel Panels.



1,25 x 0,80 x 0,35 m

25 KG

351-7000-3GSE



INLET COWL COVER



DESCRIPTION – USE

The Inlet Cowl Cover is used to protect the Engine from dust, water and wind during parking, mooring or storage of the aircraft.



CAUTION

Without the Inlet Cowl Cover, water, dust or wind can go inside the Engine.

> Water retention: Accelerates corrosion.

> Dust: The Engine could be damaged during the ignition.

> Wind: Allows blade rotation which can create damage.

The Engine warranty may be void if the Covers are not used properly under the required conditions and there is damage to the Engine.



0,80 x 0,50 x 0,40 m



20 KG



351-7000-4GSE



INLET COWL TRANSPORTATION PALLET



DESCRIPTION – USE

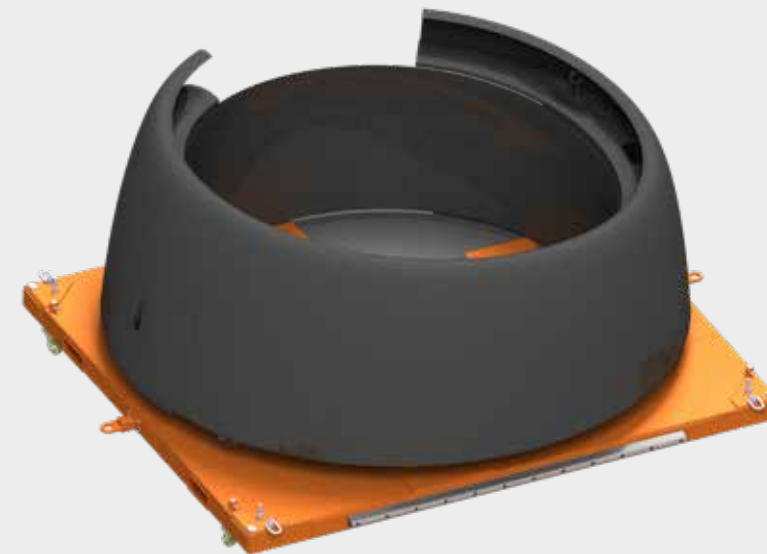
The Inlet Cowl Transportation Pallet is highly recommended. If the airline does not own a spare Inlet Cowl, the Pallet will allow quicker transportation to a qualified MRO (if the airline does not have the repair capability). Where hangar or shop space is limited this Pallet is a good, but limited alternative to the Inlet Cowl Dolly 351-7000-2GSE.



4,60 x 3,55 x 2 m



1300 KG



351-7000-5GSE



FAN COWL HANDLING SLING



DESCRIPTION – USE

The Fan Cowl Sling is used to remove or re-install the Fan Cowl on the Engine. Once a Fan Cowl is off of the Engine the Fan Cowl Sling is used to load and unload the Fan Cowl on the Shipping Pallet or Fan Cowl Dolly.



CAUTION

This Sling is a lifting tool and it's the only tool validated to lift the A350 Fan Cowl. If the Fan Cowl is lifted with another tool, and there is damage, insurance may not cover the damage.



TEST

Dedienne Aerospace has regional facilities to aide in the required annual testing and recertification.



1,20 x 0,80 x 0,50 m



70 KG



351-2100-14GSE



FAN COWL DOLLY



DESCRIPTION – USE

The Fan Cowl Dolly is used to move the Fan Cowl in the hangar or shop and for Fan Cowl Storage. The Fan Cowl can be maintained or stored on the Fan Cowl Dolly.



CAUTION

After using the Fan Cowl Sling (-14GSE) to remove a Fan Cowl from the Engine, the Fan Cowl Dolly (-15GSE) is needed to move, store or do maintenance on the Fan Cowl.



4,90 x 2,40 x 1,60 m



1100 KG



351-2100-15GSE





FAN COWL HINGE BOLT THREAD PROTECTORS



DESCRIPTION - USE

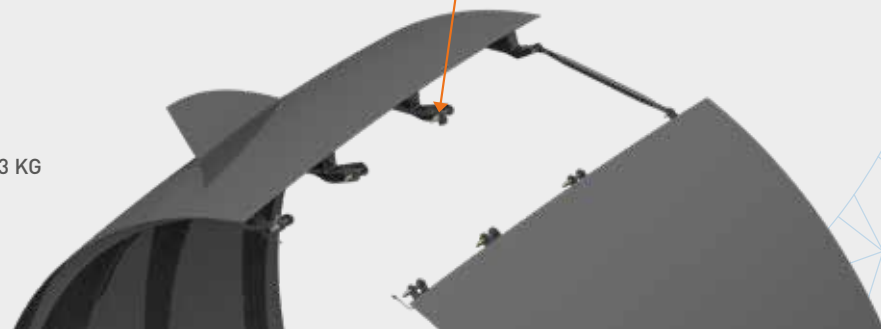
The Fan Cowl Hinge Bolt Protectors are used to protect the Bolt threads during removal and installation of the Fan Cowl from the Engine. It allows the Fan Cowl to be removed or installed on the Engine without damaging the Bolt threads.



0,40 x 0,30 x 0,16 m



3 KG



351-2100-16GSE



FAN COWL DOOR PLUG



DESCRIPTION - USE

The Fan Cowl Door Plug is used to cover the Fan Cowl Vent and protect the Engine from dust, water and wind during parking, mooring or storage of the aircraft.



CAUTION

Without the Fan Cowl Door Plug, water, dust or wind can go inside the Engine.

> Water retention: Accelerates corrosion.

> Dust: The Engine could be damaged during the ignition.

> Wind: Allows blade rotation which can create damage.

The Engine warranty may be void if the Covers are not used properly under the required conditions and there is damage to the Engine.



0,50 x 0,40 x 0,40 m



5 KG



351-2200-17GSE



FORWARD SECONDARY STRUCTURE SLING



DESCRIPTION – USE

This Forward Secondary Structure Sling is used to remove or install the Forward Secondary Structure on the aircraft Pylon. The Forward Secondary Structure is high off the ground above the Engine. It is needed for the mechanics to safely remove and install the Forward Secondary Structure.



CAUTION

This tool is a lifting tool and it is the only tool validated to lift the A350 Forward Secondary Structure. If the Forwards Secondary Structure is lifted with another tool, and there is damage, the insurance may not cover that damage.



TEST

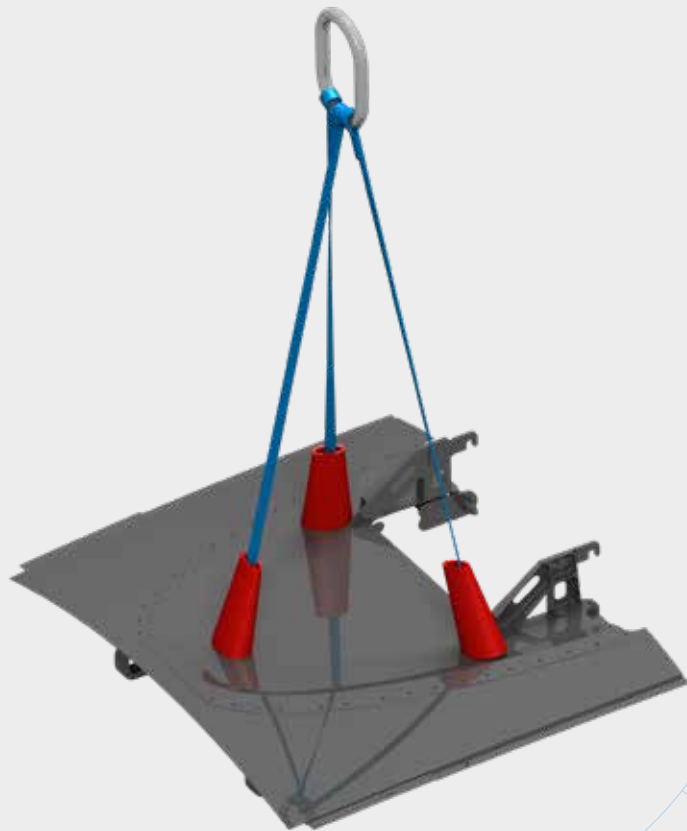
Dedienne Aerospace has regional facilities to aide in the required annual testing and recertification.



0,80 x 0,50 x 0,40 m



10 KG



351-1000-25GSE



THRUST REVERSER SLING - LH/RH



DESCRIPTION – USE

The Thrust Reverser Sling is used to load or unload the Thrust Reverser from the Transportation Pallet, rotate it, then install or remove the Thrust Reverser from the Engine/Pylon.



CAUTION

This tool is the only tool validated to lift the A350 Thrust Reverser. If the Thrust Reverser is lifted using another tool, and there is damage, the insurance may not cover the damage.



TEST

Dedienne Aerospace has regional facilities to aide in the required annual testing and recertification.



2,60 x 1,70 x 0,65 m



400 KG



351-3000-6GSE



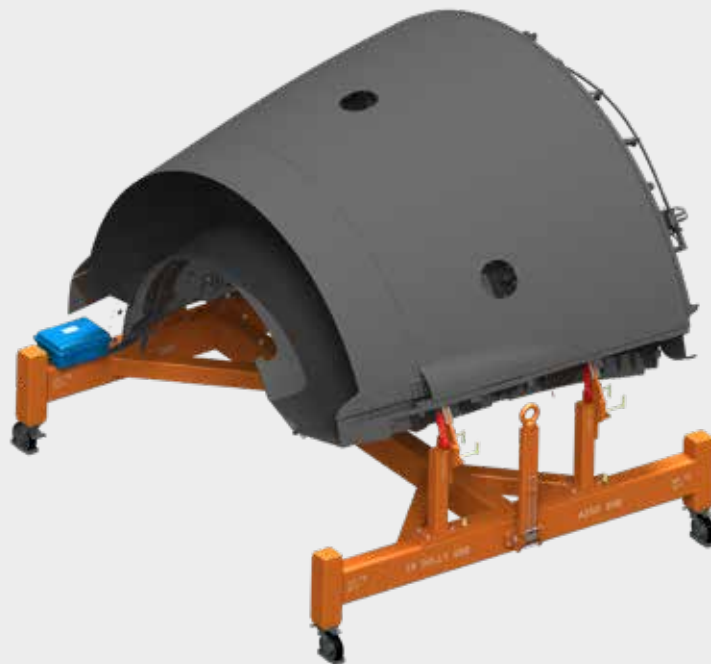
THRUST REVERSER DOLLY

DESCRIPTION - USE

The Thrust Reverser Dolly is used for maintenance work and moving the Thrust Reverser in the hangar or shop. The Dolly allows to make inspections or repairs into the inside surface of the Thrust Reverser.

CAUTION

When the Thrust Reverser is removed from the aircraft using the Thrust Reverser Sling, the Thrust Reverser Dolly is needed to store or work on the Thrust Reverser.



3,70 x 3,10 x 1,70 m

1350 KG

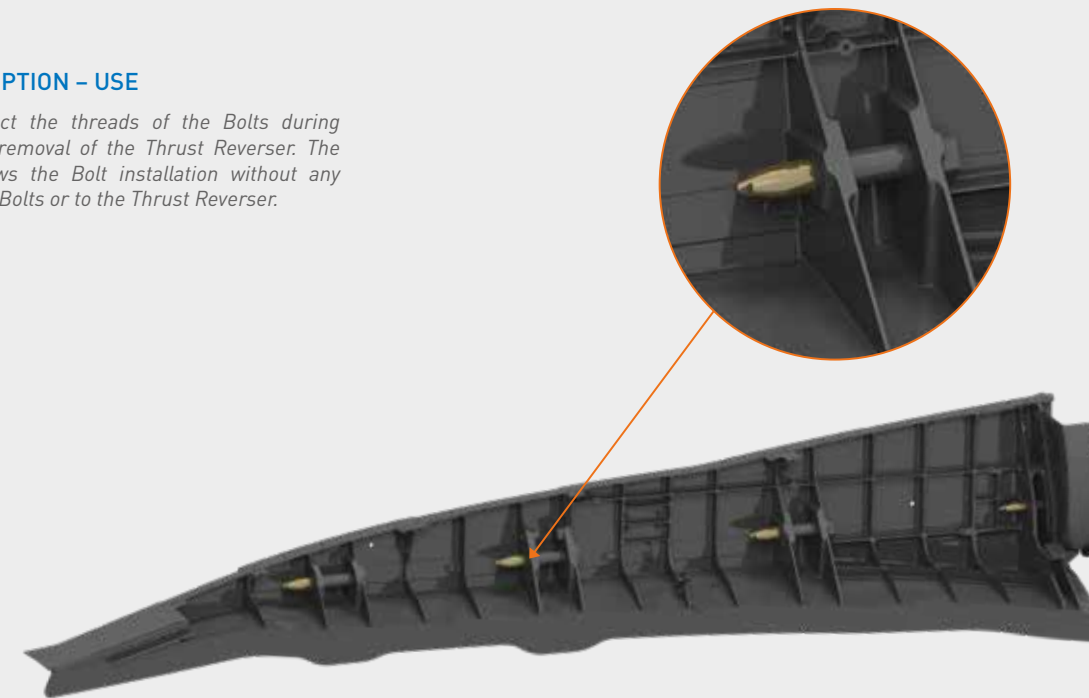
351-3000-7GSE



THRUST REVERSER HINGE BOLT THREAD PROTECTOR

DESCRIPTION - USE

Used to protect the threads of the Bolts during installation & removal of the Thrust Reverser. The Protector allows the Bolt installation without any damage to the Bolts or to the Thrust Reverser.



0,40 x 0,30 x 0,16 m

3 KG

351-3000-8GSE





THRUST REVERSER COVER

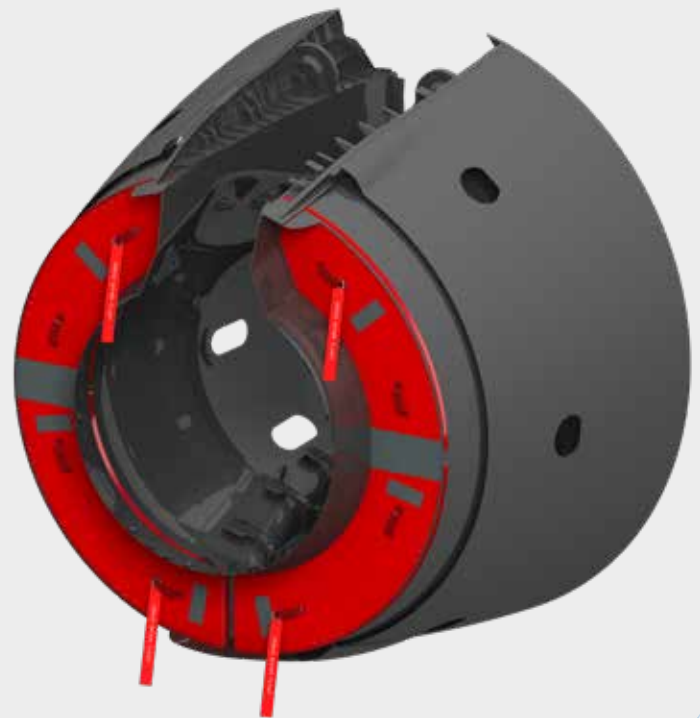
DESCRIPTION - USE

The Thrust Reverser Cover is used to protect the Thrust Reverser By-pass Ducts from dust, water and wind during parking, mooring or storage of the aircraft.

CAUTION

Without the Thrust Reverser Cover, water, dust or wind can go inside the Engine.
> Water retention: Accelerates corrosion.
> Dust: The Engine could be damaged during the ignition.
> Wind: Allows blade rotation which can create damage.
The Engine warranty may be void if the Covers are not used properly under the required conditions and there is damage to the Engine.

2,20 x 1 x 0,70 m 110 KG



351-3000-10GSE

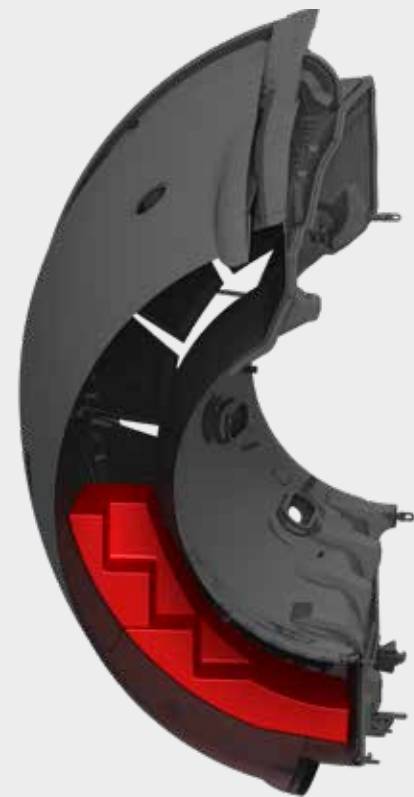


THRUST REVERSER C-DUCT STEP BLOCKS

DESCRIPTION - USE

The Thrust Reverser C-Duct Step is used to give access to the upper half of the C-Duct for inspection or maintenance.

1,75 x 1,60 x 1 m 193 KG



351-3000-11GSE



THRUST REVERSER HYDRAULIC OPENING SYSTEM

DESCRIPTION – USE

The Thrust Reverser Hydraulic Opening System is used to manually open and close the Thrust Reverser C-Ducts. The three manometers allow this pump to open both Thrust Reverser C-Ducts at the same time to check the hydraulic pressure on each C-Duct.

CAUTION

The Thrust Reverser Hydraulic Opening System or pump has been designed for use on the A350. If another pump is used to open the C-Ducts and there is damage, the damage may not be covered by the insurance.

TEST

Dedienne Aerospace has regional facilities to aide in the required annual testing and recertification.

1 x 0,80 x 1,15 m

80 KG



351-3000-12GSE




THRUST REVERSER PRD LATCH

DESCRIPTION – USE

To perform functional tests of Thrust Reverser Latch forces. This tool is needed to check the stresses applied to the Latch. This tool needs to be used yearly.

CAUTION

This tool is needed to test the Latch. If the Latch is not properly calibrated it may open unnecessarily in flight or it may not open when required during a pressure increase. This may cause the Thrust Reverser to depart the aircraft.

0,35 x 0,20 x 0,20 m

1 KG



351-3000-26GSE



TRANSLATING SLEEVE HANDLING SLING

DESCRIPTION – USE

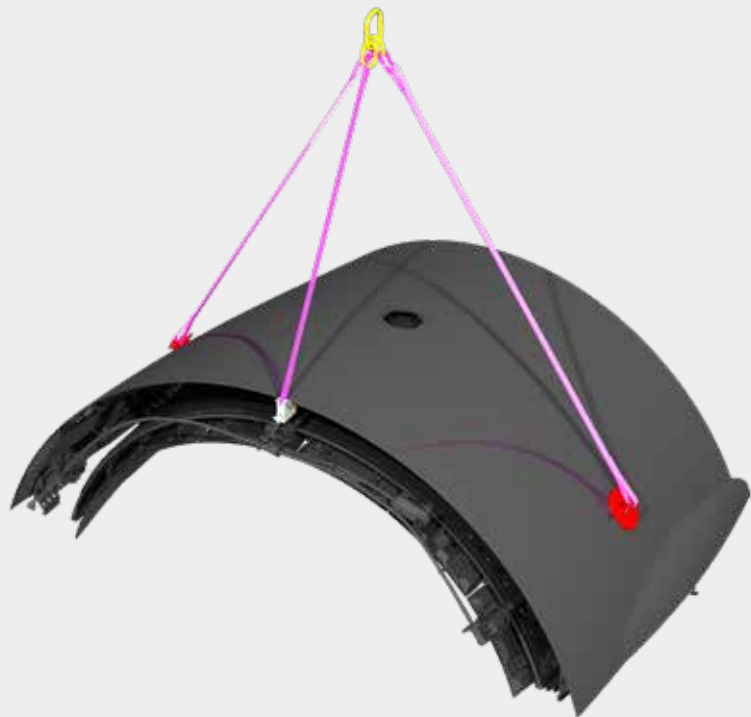
To add or remove Transleeve from Inner Fixed Structure while TR is on the Dolly.

CAUTION

This tool is the only validated to add or remove the Transleeve for the A350. If the Transleeve is lifted with another tool, and there is damage, the insurance may not cover the damage.

TEST

Dedienne Aerospace has regional facilities to aide in the required annual testing and recertification.



1,20 x 0,80 x 0,50 m

50 KG

351-6100-27GSE




THRUST REVERSER HOLD OPEN STRUT TO PYLON

DESCRIPTION – USE

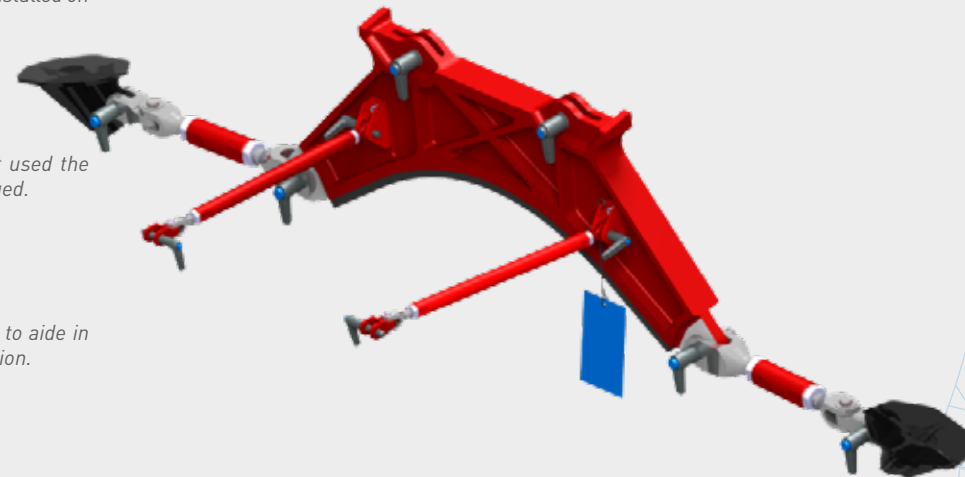
The Thrust Reverser Hold Open Strut is used to hold open both Thrust Reverser Halves (C-Ducts) during the removal or installation of the Engine from the Pylon. This tool also allows the Thrust Reverser Halves to be held open without the Engine installed on the Pylon on A350.

CAUTION

This tool is mandatory for this task. If not used the Thrust Reverser or the Pylon can be damaged.

TEST

Dedienne Aerospace has regional facilities to aide in the required annual testing and recertification.



1 x 0,60 x 0,50 m

30 KG

351-3000-36GSE





FWD CENTERBODY HANDLING AID



DESCRIPTION – USE

The FWD Center-body Handling Aid is used to assist manually removing and re-installing the FWD Center-body on the Engine by two mechanics.



CAUTION

This Aid is a lifting tool and it is the only tool validated to lift the A350 Centerbody. If you lift the centerbody with another tool you will not be covered by your insurance. If the FWD Center-body is lifted with another tool, and there is damage, insurance may not cover the damage.



TEST

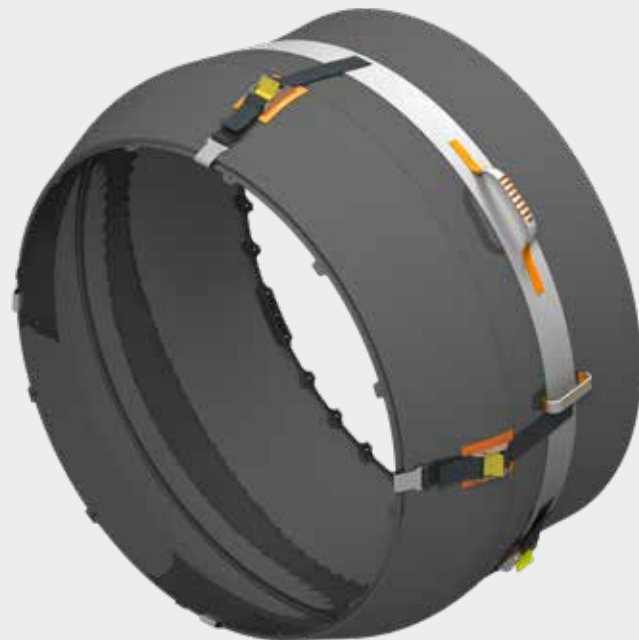
Dedienne Aerospace has regional facilities to aide in the required annual testing.



0,60 x 0,40 x 0,40 m



8 KG



351-5010-19GSE



AFT CENTERBODY HANDLING GSE



DESCRIPTION – USE

Used for removal and instalation of aft center body only.



CAUTION

This Aid is a lifting tool and it is the only tool validated to lift the A350 Centerbody. If you lift the centerbody with another tool you will not be covered by your insurance. If the AFT Center-body is lifted with another tool, and there is damage, insurance may not cover the damage.



TEST

Dedienne Aerospace has regional facilities to aide in the required annual testing.



0,60 x 0,40 x 0,40 m



8 KG



351-5060-20GSE



NOZZLE HANDLING AID



DESCRIPTION - USE

The Nozzle Handling Aid is used to remove or install the Nozzle on the Engine onto the A350. The Exhaust Dolly (-24GSE) is used to move or store the Nozzle in the hangar or shop.



CAUTION

This Aid is a lifting tool and it is the only tool validated to lift the A350 Nozzle. If the Nozzle is lifted with another tool, and there is damage, the insurance may not cover that damage.



TEST

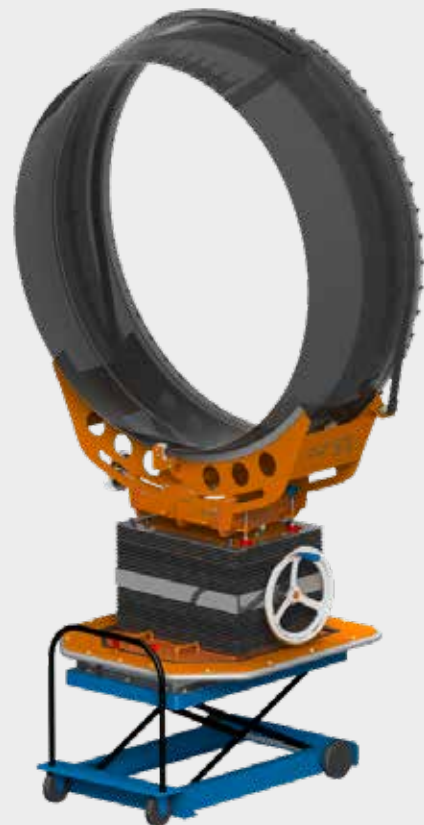
Dedienne Aerospace has regional facilities to aide in the required annual testing and recertification.



1,80 x 1,80 x 1,80 m



500 KG



351-4010-21GSE



CENTER-BODY/NOZZLE PROTECTIVE RUG



DESCRIPTION - USE

This tool is used as a Protective Rug on the Nozzle inner surface during Maintenance or Removal-Installation activity on Nozzle.



0,80 x 0,60 x 0,50 m



17 KG



351-4000-22GSE



EXHAUST COVER



DESCRIPTION – USE

The Exhaust Cover is used to protect the Engine from dust, water and wind during parking, mooring or storage of the aircraft.



CAUTION

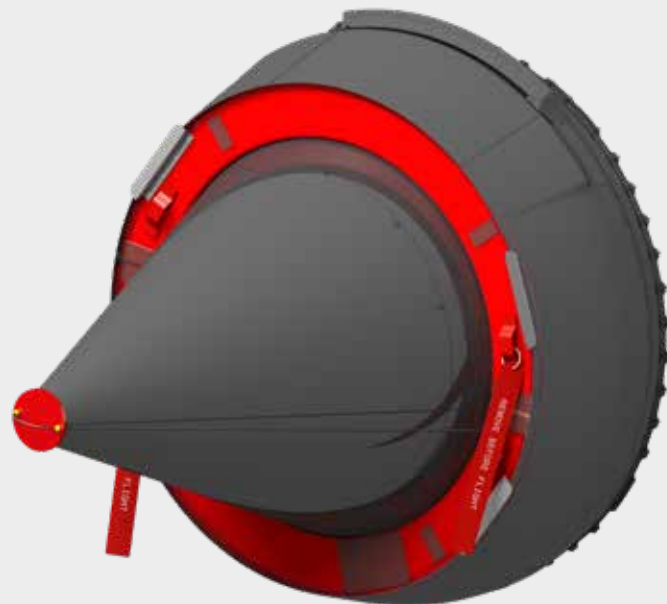
Without the Exhaust Cover, water, dust or wind can go inside the Engine.

> Water retention: Accelerates corrosion.

> Dust: The Engine could be damaged during the ignition.

> Wind: Allows blade rotation which can create damage.

The Engine warranty may be void if the Covers are not used properly under the required conditions and there is damage to the Engine.



1,80 x 1 x 0,40 m



52 KG

351-4000-23GSE



EXHAUST DOLLY



DESCRIPTION – USE

The Exhaust Dolly is used to move, do maintenance and store the FWD Center-body, Center-body and Nozzle after removal from the Engine.



CAUTION

After using the -19GSE & -21GSE the -24GSE is required for transportation or storage of the Center-body and Nozzle. Without the -24GSE, it will be difficult to store or work on these items.



3 x 1,60 x 1,10 m



560 KG

351-4000-24GSE

CONTACT



PROGRAM MANAGEMENT nacelletooling@dedienne-aero.com

01 02 03 04 05 06 07	TECHNICAL SUPPORT	nacelletooling@dedienne-aero.com
01	SALES AMERICAS	sales.americas@dedienne-aero.com
02	SALES EUROPE	sales.europe@dedienne-aero.com
03	SALES RUSSIA	sales.russia@dedienne-aero.com
04	SALES MIDDLE EAST & AFRICA	sales.mea@dedienne-aero.com
05	SALES INDIA	sales.india@dedienne-aero.com
06	SALES SINGAPORE & ASIA PACIFIC	sales.sea@dedienne-aero.com
07	SALES CHINA	sales.cn@dedienne-aero.com

FACILITIES

AMERICAS

MIAMI
2500 NW 74. AVE
Miami - FL 33122 - USA
+ 1 305 716 83 00

CINCINNATI
4330 batavia road
Batavia - Ohio - USA
+ 1 513 628 6628

QUERETARO
Paseo del Yabirol 16
Corregidora - Querétaro
CP76912 - MEXICO
+52 1442 495 9246

EUROPE

FRANCE
ZAC de Saint-Martin
5, rue Gaye Marie
31300 - Toulouse
FRANCE
+ 33 5 61 06 77 79

UNITED KINGDOM
5-7 Lisbon House
St Mary's Gate
Derby - ENGLAND
DE13JA
+44 77 020 109 75

RUSSIA
D.Bednogo street 19k2
123423 - Moscow
RUSSIA
+7 (499) 375 49 50

MIDDLE EAST

DUBAI
Warehouse LIU J09
Dubai Airport Freezone
P.O.Box: 372023
Dubai - UAE
+ 971 4 295 00 71

QATAR
QFC TOWER 1
Business center -
1st floor- office number 7
Doha, QATAR
+ 974 4496 8108

TURKEY
Kolektif House Levent
Esentepe Mahallesi,
Talatpaşa Cd. No:5 - C52,
34394 Şişli/İstanbul
+971 4 295 0071

ASIA PACIFIC

SINGAPORE
1 Seletar
Aerospace Lane
SINGAPORE 797435
+ 65 62 62 59 79

CHINA / HONG-KONG

CHINA
N°5 Jinliang Road
Hongqi town
Jinwan Zone
519090 Zhuhai City
Guangdong
P.R. CHINA
+86 756 88 18 839

HONG-KONG
806 Capitol Centre
5-19 Jardine's Bazaar
Causeway Bay
HONG KONG
+86 135 02 88 7955

WEBSITES & SOCIAL MEDIA

DEDIENNE AEROSPACE
DEDIENNE-AERO.COM



LEAPTOOLING.COM



NACELLETOOLING.COM



[LINKEDIN.COM/
COMPANY/DEDIENNE-AEROSPACE](https://www.linkedin.com/company/dedienne-aerospace/)



[@DEDIENNEAEROSPACE](https://www.instagram.com/DEDIENNEAEROSPACE)

TOOLING SERVICES



LOAD TEST

- ▶ 0-200T STATIC & DYNAMIC LOAD TESTING
- ▶ 0-200T TEST BENCH
- ▶ MOBILE DEVICE FOR CUSTOMER ON-SITE TESTS

CALIBRATION

- ▶ FORCE & PRESSURE CALIBRATION
- ▶ 3D MEASUREMENTS

REPAIR & UPGRADE

- ▶ REPAIR OF UNSERVICEABLE EQUIPMENT
- ▶ PERIODIC MAINTENANCE
- ▶ UPGRADE TO LATEST RELEASE BASED ON TCB, AMM AND OEM INFORMATION
- ▶ OFF & ON-SITE MAINTENANCE

TRAINING YOUR TEAM

- ▶ GLOBAL NETWORK OF TECHNICAL INSTRUCTORS
- ▶ TRAINING ON USE & MAINTENANCE



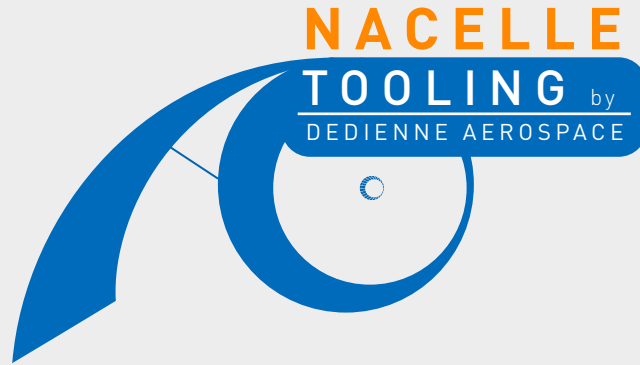
RENTAL SOLUTIONS

- ▶ EQUIPMENT AVAILABLE FOR RENT
- ▶ ENGINE STAND: LEAP, CFM, ROLLS-ROYCE, IAE, ETC.
- ▶ GSE: TRIPOD, TOWBAR, ETC.

SPARE PARTS AVAILABLE

- ▶ ALL DEDIENNE AEROSPACE SPARE PARTS IN STOCK
- ▶ FAST PROVISIONING OF ANY OEM SPARE PARTS
- ▶ QUICK DELIVERY & SHIPMENT WORLDWIDE

This image shows a blank, lined page from a notebook. The page is white with horizontal blue lines. On the left side, there is a blue geometric pattern consisting of various shades of blue triangles and polygons. On the right side, there is a light blue grid pattern. The page is otherwise empty, with no text or other markings.



WWW.NACELLETOOLING.COM
NACELLETOOLING@DEDIENNE-AERO.COM